



OCSN

Ottawa Community
Schools Network

ANNUAL REPORT

2020 - 2021

OVERVIEW

OUR CORE

The core of our work is focused on four different, but interrelated, areas:



INTEGRATED STUDENT SUPPORTS

A dedicated staff member coordinates support programs to address out-of-school learning barriers for students and families. Mental and physical health services support student success.



ACTIVE FAMILY & COMMUNITY ENGAGEMENT

Schools function as neighborhood hubs. There are educational opportunities for adults, and family members can share their stories and serve as equal partners in promoting student success.



COLLABORATIVE LEADERSHIP & PRACTICES

Parents, students, teachers, principals, and community partners build a culture of professional learning, collective trust, and shared responsibility through site-based leadership teams and learning opportunities for teachers.

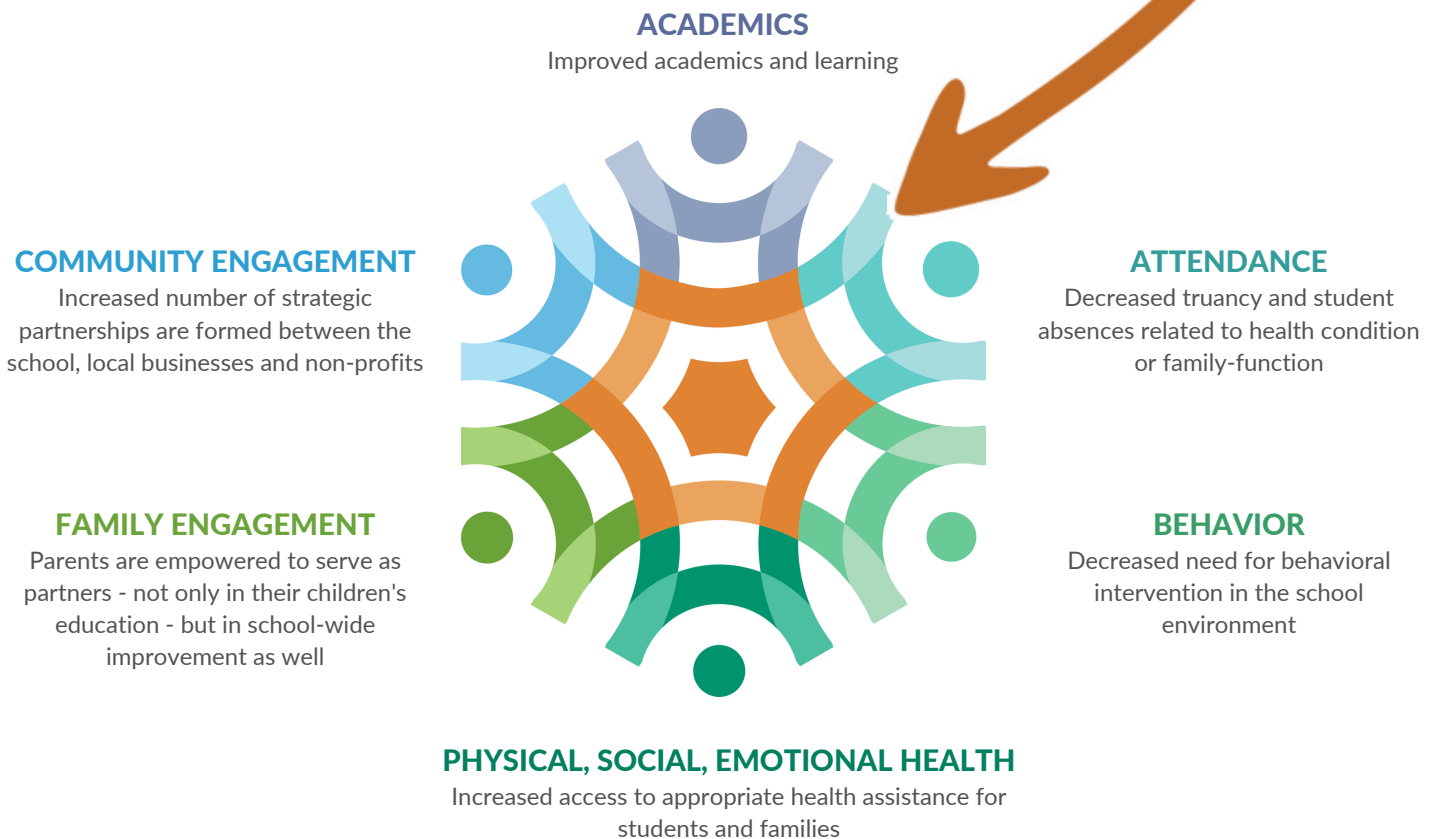


EXPANDED & ENRICHED LEARNING

Enrichment activities are essential to a schools' capacity to support students academic growth, as well as to help them develop socially, emotionally, and physically. After-school, weekend, and supper programs provide academic instruction and individualized support.

OUTCOMES

As a result of concentrated work, we expect to see changed outcomes in the following areas:



PARTNERING SCHOOLS



OCSN currently has **13 Community School Coordinators** and **1 Coordinator Assistant** working in **15 school buildings** across **6 OAISD districts**. Of those staff members, one Coordinator and the Assistant were added this past year. We are excited to add **2** new Community School Coordinators at Holland Language Academy and Holland West Elementary in August 2021.

6

SCHOOL DISTRICTS WITH COMMUNITY SCHOOL COORDINATORS

ALLENDALE PUBLIC SCHOOLS

Evergreen Elementary
Allendale Early Childhood center

COOPERSVILLE AREA PUBLIC SCHOOLS

West ECC
East Elementary School
South Elementary School

HAMILTON COMMUNITY SCHOOLS

Hamilton Elementary School
Hamilton Middle School

HOLLAND PUBLIC SCHOOLS

Holland Language Academy
Jefferson Elementary School
West Elementary School
Holland Middle School
Holland High School

HUDSONVILLE PUBLIC SCHOOLS

South Elementary School

ZEELAND PUBLIC SCHOOLS

Roosevelt Elementary School
Venture Academy

INTEGRATED STUDENT SUPPORTS



Integrated Student Supports is a school-based approach to supporting a student's academic success by developing or securing and coordinating supports that target academic and non-academic barriers to achievement. Coordinators work within multidisciplinary teams to identify the supports students need and then find ways to provide comprehensive supports and opportunities that are carefully selected to meet the unique needs and interests of students and families.

164

STUDENTS CONNECTED TO A THERAPIST AND STARTED SERVICES

“

OCSN HAS PROVIDED MENTAL HEALTH SERVICES TO SEVERAL OF MY STUDENTS WITH HIGH NEEDS TO MAKE SURE THEIR MENTAL HEALTH IS BEING ADEQUATELY ADDRESSED. KNOWING THAT THOSE SERVICES WERE BEING COORDINATED AND FOLLOWED THROUGH HERE AT SCHOOL MADE ME FEEL AT EASE AND ABLE TO FOCUS ON TEACHING.

-TEACHER, HOLLAND MIDDLE SCHOOL.

”

Partnering Mental Health Agencies:

- Arbor Circle
- Bloom Counseling
- Midtown Counseling
- Mosaic Counseling
- Solace Counseling
- West Michigan Psychological Services

21

SOCIAL AND EMOTIONAL SUPPORT SMALL GROUPS FOR STUDENTS STARTED

208

SOCIAL AND EMOTIONAL CLASSROOM LESSONS TAUGHT

COMMUNITY ENGAGEMENT



Community schools prioritize meaningful and ongoing engagement of community members and establish the systems, structures and supports to make it happen. Engagement happens on a continuum with schools and community partners working together to meet the needs of children so they are healthy, safe, supported, engaged and challenged.

Community partners were invaluable in helping meet increased needs during COVID this past year. Although volunteers were not able to be physically present in buildings, community partners continued to offer support to students, school staff and families in a variety of ways.

71

NEW COMMUNITY PARTNERSHIPS FORMED

\$77,547

IN DONATIONS AND GRANTS RECEIVED FROM COMMUNITY PARTNERS

231

COMMUNITY PARTNERS SUPPORTED AN OCSN SCHOOL



“

NEEDS ARE ABLE TO BE MET MUCH MORE QUICKLY NOW THANKS TO THE INCREASE IN CONNECTIONS AND OPPORTUNITIES WITH COMMUNITY PARTNERS FOR FAMILIES.

-TEACHER, HAMILTON MIDDLE

”

FAMILY ENGAGEMENT



A large part of OCSN's work is to remove barriers that impede students and families from being at school and ready to learn. The coordinators build relationships with families to equip, empower and walk alongside them to ensure students are healthy, safe and supported.

Despite increased restrictions in school building access this past year, innovative Coordinators effectively worked with families to help meet additional needs and challenges that were created by the pandemic.

“ PRIOR TO OCSN (AS A TEACHER) I WASN'T SURE WHERE OR HOW TO DIRECT FAMILIES. NOW, NEEDS ARE MET FOR FAMILIES. I'M SO THANKFUL FOR MISS LANA AND HER RESOURCES.
-TEACHER, ROOSEVELT ELEMENTARY, ZEELAND ”

806

REFERRALS TO SOCIAL SERVICE AGENCIES FOR BASIC NEEDS TO BE MET

2,348

HOUSEHOLDS SERVED AT FEEDING AMERICA MOBILE PANTRY SCHOOL-BASED SITES LED BY OCSN COORDINATORS

3,669

CHILDREN PROVIDED WITH FOOD THROUGH THE FEEDING AMERICA MOBILE PANTRIES



FEEDING AMERICA MOBILE PANTRIES

OCSN district sites:

- Coopersville Area Public Schools
- Hamilton Community Schools
- Holland Public Schools
- Zeeland Public Schools

“ "OUR OCSN COORDINATOR HELPS TAKE AWAY THE STIGMA OF ASKING FOR HELP AND MAKES OUR FAMILIES FEEL VALUED. SHE HAS ESTABLISHED A GREAT RAPPORT WITH STUDENTS WHO NOW FEEL COMFORTABLE CONFIDING IN HER."
-TEACHER, HUDSONVILLE SOUTH ELEMENTARY ”

COLLABORATIVE LEADERSHIP



Collaborative leadership is the relational “glue” that connects and reinforces all the other focus areas of community schools. Collective trust and shared responsibility is built through the Coordinator's integration into school-based student support teams, facilitating community partner meetings, and shared professional development opportunities.

56

COMMUNITY SCHOOL LEADERSHIP TEAM MEETINGS FACILITATED AT OCSN SCHOOLS

Community School Leadership Teams (CSLTs) conduct monthly stakeholder meetings and include an OCSN Coordinator, community partners, school administration, and oftentimes parents. These meetings serve as space to advance the school's work around Whole Child initiatives. Teams continued to meet virtually this year to provide a tremendous amount of important guidance, connections, and resources.

OCSN administration participates on many of the health and human service collaboratives around the county to serve as a connection point and representatives for schools. This year, OCSN also helped facilitate collaborative efforts to support student mental health needs. Below are some examples of the ways OCSN helped to collaboratively address needs as they emerged this year.

“

THE RESOURCES AND EXAMPLES PROVIDED IN EACH MEETING MADE IT EASIER TO BEGIN CONVERSATIONS ABOUT DIFFERENT RESOURCES OR INTERVENTIONS WITH CONCRETE EVIDENCE TO SHARE WITH MY TEAM.

-PLC PARTICIPANT.

”



MENTAL WELLNESS PLC

OCSN helped create and lead a monthly Professional Learning Community for school professionals working to advance mental health supports in their districts. The shared goal was "Working Together to Support Student Mental Health."

- Representatives from 15 school districts participated
- Provided training on supporting student mental health
- Monthly presentations for community agencies
- Built collaborative relationships



SUICIDE PREVENTION COALITION

In partnership with community partners from the Ottawa County Suicide Prevention Coalition and Ottawa Area ISD, OCSN helped lead the Ottawa Area Secure Schools Network Spring Summit which addressed suicide prevention. School teams worked through their suicide prevention plans and gained awareness of county-wide resources available to them. Resources from the summit are available on the [OASSN Website](#).

EXPANDED & ENRICHED LEARNING TIME & OPPORTUNITIES



OCSN collaborates with community partners to provide well-structured learning and enrichment activities year round by using school facilities and other community spaces to level the playing field for students without access to community-based or costly enrichment programs, or personalized tutors.

269

STUDENTS RECEIVED ACADEMIC TUTORING SUPPORTS

Opportunities for during, before and after school experiences were limited during COVID, however, coordinators still found ways to plan enrichment programming to keep students and families engaged while working within COVID restrictions.

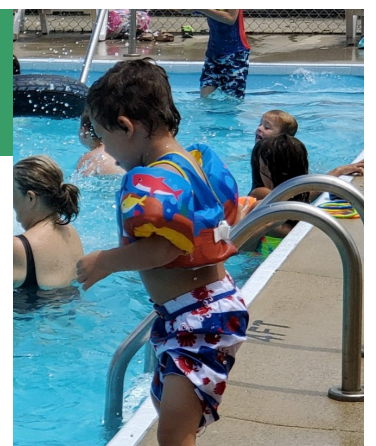


ENGAGEMENT OPPORTUNITIES DURING COVID

- Coopersville students grew milk-carton community gardens while learning from home last spring.
- Schools helped students stay connected to their mentors through safe offsite lunches, meeting virtually or by becoming pen pals.
- Several schools worked with school staff and local libraries to coordinate and support summer reading programs.
- Jefferson Elementary partnered with Gentex to provide an outdoor STEM night. Community partners from their Community School Leadership Teams rallied to provide information and hands-on STEM activities at various socially distanced booths.
- Students and families at OCSN schools in Allendale and Coopersville participated in a BE NICE initiative to teach SEL skills by creating over 400 homemade Valentine's Day cards for residents in their local area assisted living homes.

SUMMER SPLASH YOUTH PROGRAM IN ZEELAND KEEPS STUDENTS ACTIVE AND CONNECTED

Three years ago and with help from community partners, the Community School Coordinator in Zeeland developed and launched the Summer Splash Youth Program to keep in touch with students during the summer. This summer, community partners and OCSN are leading activities and providing meals for children three times a week- averaging 30 students a day. Some highlights included a bowling field trip, pool party and taking a trip to visit reptiles.



ANNUAL SCHOOL STAFF SURVEY RESULTS



Each year, school staff at our partnering schools complete a survey to evaluate the impact and effectiveness of OCSN in their buildings. The survey asks questions regarding the impact a Community School Coordinator has on students and families, as well as questions about the staff member's role.

Here are a few of the responses:

99%

OF SCHOOL STAFF SAID..

Having a community school coordinator **fills a need that would otherwise go unmet.**

“ Our coordinator has become such a valued member of our school community. She addresses the needs of students that would not otherwise be met, like arranging counseling, running student circles, and providing staff support. She has helped to better our school culture in a variety ways and it makes coming to work a better experience. -TEACHER, HAMILTON MIDDLE SCHOOL ”

98%

OF SCHOOL STAFF SAID..

Having an OCSN Community School Coordinator had a **positive impact on students and/or families**

“ Families are becoming more aware of resources available. Casey reaches out to families and gives them many opportunities to get what they need. She is checking in with them frequently and increasing that trust and bond between home and school. Students feel comfortable talking with Casey, and she makes a positive impact on their lives. Casey also is there for staff and has focused on their social/emotional health this year as well. -TEACHER, COOPERSVILLE WEST ”

95%

OF SCHOOL STAFF SAID..

Having an OCSN Community School Coordinator has had a **positive impact on their role in the school**