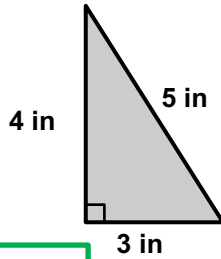


7th Grade Geometry Readiness: Spring Screener

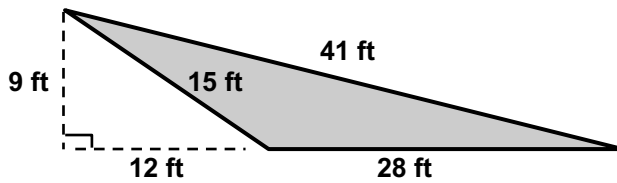
Questions 1-3: Select the correct number and label for each question.

1. Find the area of the triangle. (Note: The figure is not drawn to scale.)



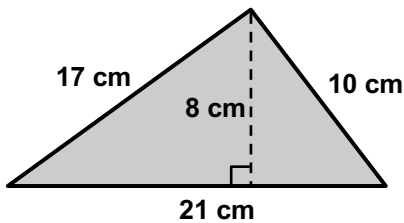
- 6 7.5 120 40
 in in³ in²

2. Find the area of the shaded triangle. (Note: The figure is not drawn to scale.)



- 180 126 84 210
 ft³ ft² ft

3. Find the area of the shaded triangle. (Note: The figure is not drawn to scale.)



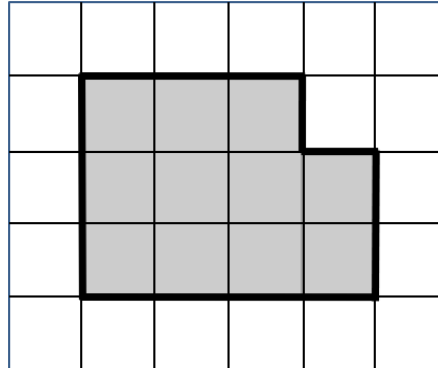
- 168 105 48 84
 cm² cm cm³



Please stop, put your pencil down and wait for the next directions.

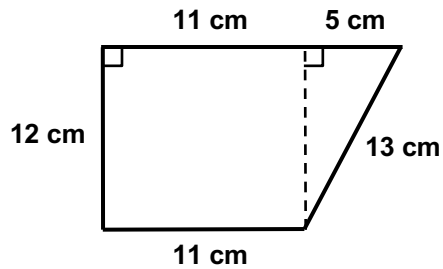
Questions 4-6: Select the correct number and label for each question.

4. Find the area of the shaded polygon.



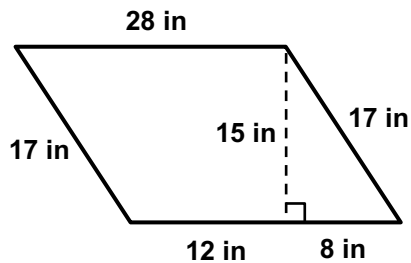
- 14 12 11 18
 Units Squared Units Cubed Units

5. Find the area of the trapezoid. (Note: The figure is not drawn to scale.)



- 175.5 162 192 132
 cm² cm cm³

6. Find the area of the parallelogram. (Note: The figure is not drawn to scale.)




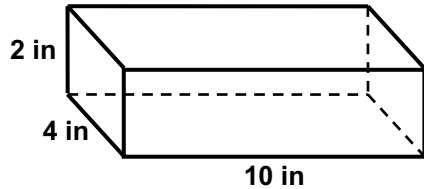
- 476 420 210 238
 in in² in³



Please stop, put your pencil down and wait for the next directions.

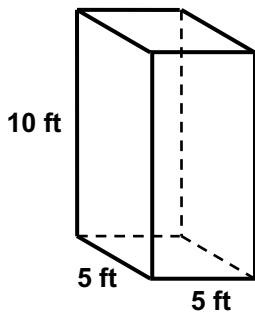
Questions 7-9: Select the correct number and label for each question.

7. What is the maximum number of 1-inch cubes  that can fit inside the right prism?
 (Note: The figure is not drawn to scale.)



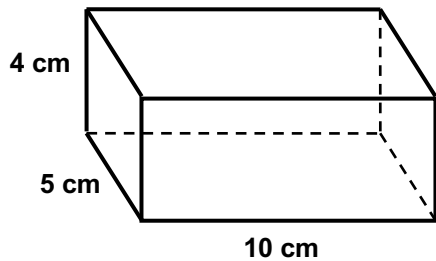
- 136 cubes
 120 cubes
 80 cubes
 56 cubes

8. Find the volume of the right prism. (Note: The figure is not drawn to scale.)



- 20
 150
 200
 250
 ft³
 ft²
 ft

9. Find the volume of the right prism. (Note: The figure is not drawn to scale.)



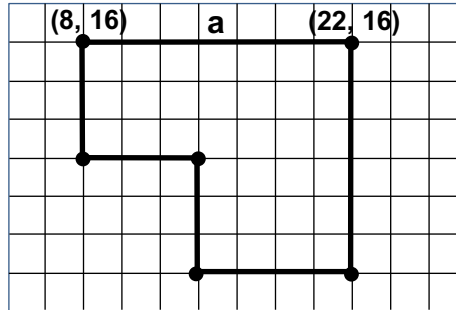
- 120
 180
 200
 220
 cm²
 cm
 cm³



Please stop, put your pencil down and wait for the next directions.

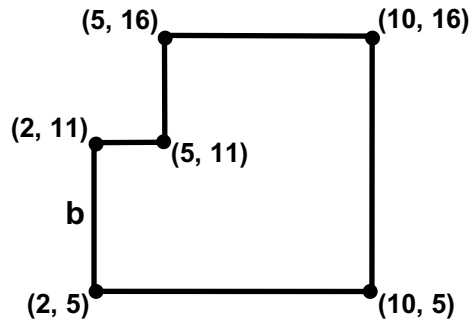
Questions 10-12: Select the correct answer for each question.

10. Find the length of side a.



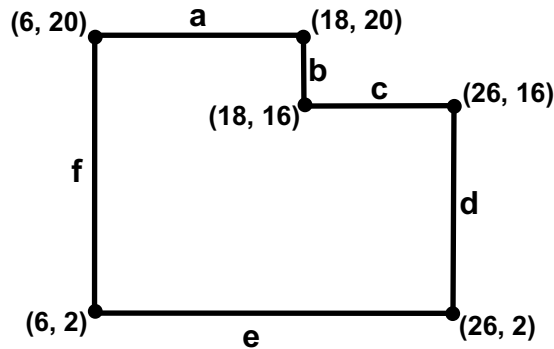
- 22
 7
 14
 30

11. Find the length of side b.



- 6
 5
 11
 2

12. Find the length of side c.



- 14
 4
 10
 12



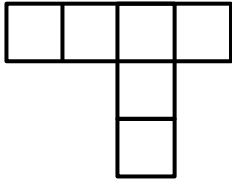
Please stop, put your pencil down and wait for the next directions.

Questions 13-15: Select the correct answer for each question.

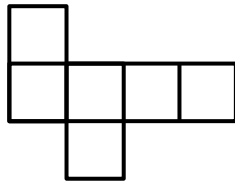
13. Which pattern could be folded to form a cube?



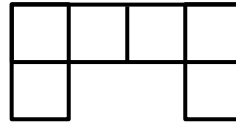
Pattern A



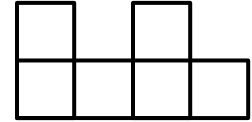
Pattern B



Pattern C



Pattern D



A

B

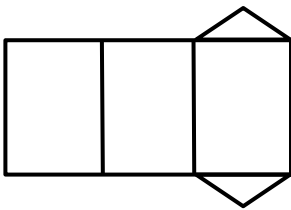
C

D

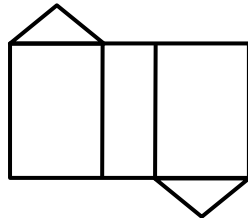
14. Which patterns could be folded to form a right triangular prism?



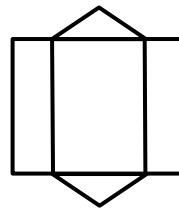
Pattern A



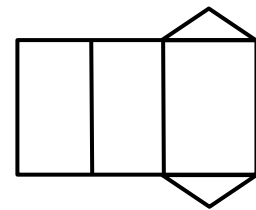
Pattern B



Pattern C



Pattern D



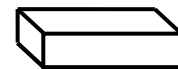
Pattern A

Pattern B

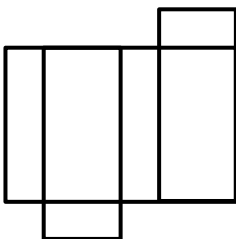
Pattern C

Pattern D

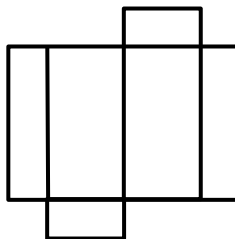
15. Which pattern could not be folded to form a right rectangular prism?



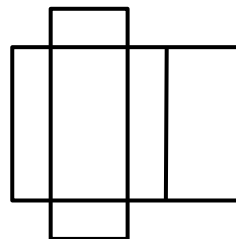
Pattern A



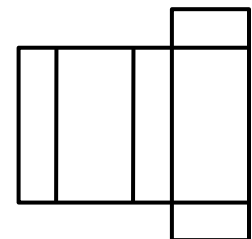
Pattern B



Pattern C



Pattern D



Pattern A

Pattern B

Pattern C

Pattern D



Please stop, put your pencil down and wait for the next directions.